

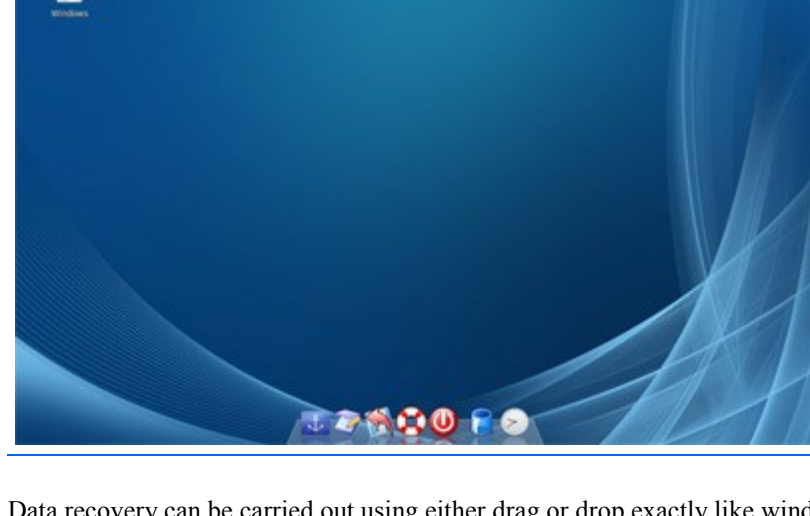
RSCDS Data Recovery Boot CD

<http://www.user-guides.co.uk>

The RSCDS Data Recovery CD is compatible with, but not limited to all the following 32 And 64 Bit operating systems. Even if any of the operating systems will not start up or have a blue or black screen of death (BSOD), this CD will boot up giving access to all the files.

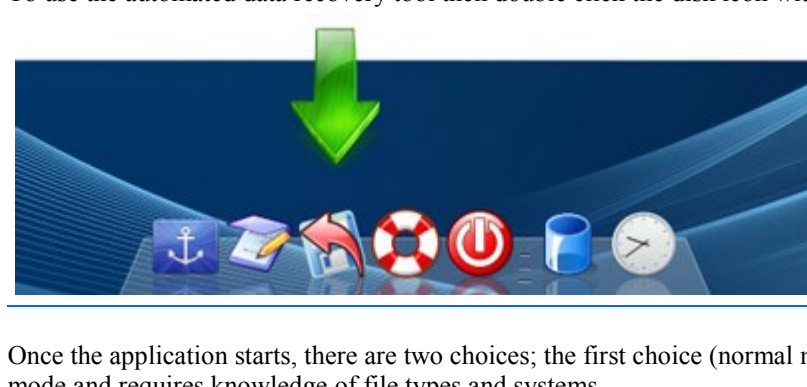


The computer will need to start with the data recovery CD all ready in the optical device. Once the computer is started with the CD in the drive, your computer may still try and boot the windows operating system. If the computer does not boot from the CD then the system will need to be setup to boot from CD. Once the computer has started from the boot cd, a screen exactly like the picture below will be visible.



1. Data recovery can be carried out using either drag or drop exactly like windows or by using the data recovery program embedded in the cd.
2. ** Please note to protect the data all source devices are Read Only and cannot be used as the destination to save recovered data to.
3. To use the drag and drop method a USB drive or external USB hard disk will be required to save the data to. Inset the USB device AFTER the data recovery CD has started. The next step will be to open the source and destination windows exactly as you would in any other operating system and drag and drop the data from one to the other.

To use the automated data recovery tool then double click the disk icon with the red arrow on it at the bottom of the page.



Once the application starts, there are two choices; the first choice (normal mode) is the best choice for an average user. The second choice is advanced mode and requires knowledge of file types and systems.

1 Data recovery using Normal Mode.

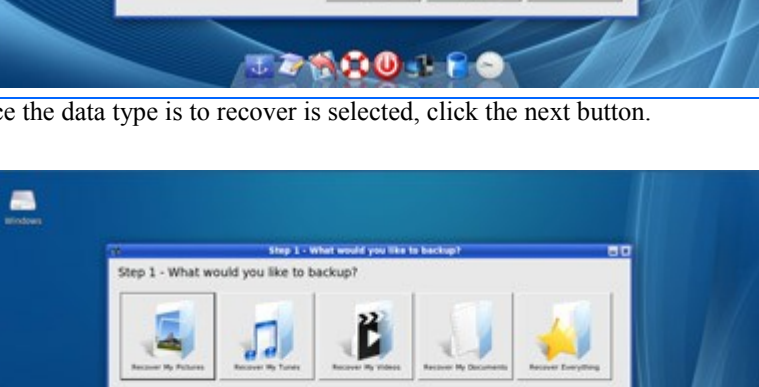


2

Select normal mode from the dialog box, another dialog box will appear asking for the types of data to recover. One option can be selected at a time or alternatively there is a selection to recover all files.

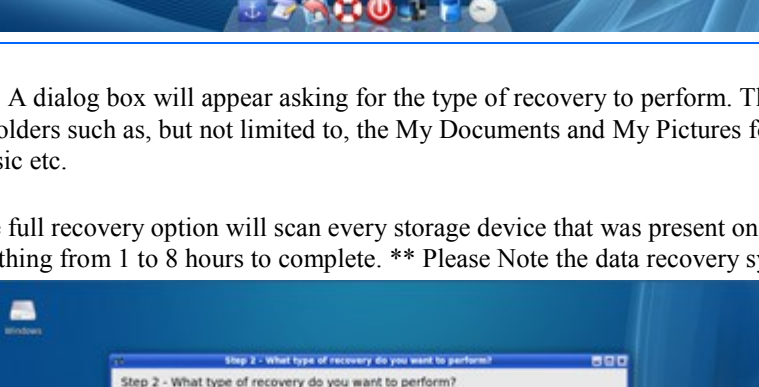


Once the data type is to recover is selected, click the next button.



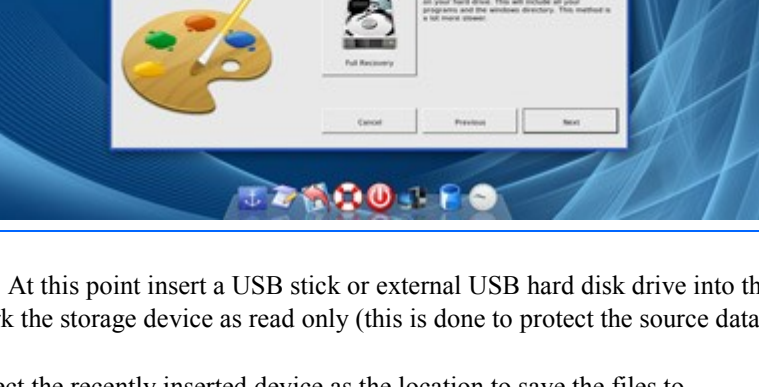
1. A dialog box will appear asking for the type of recovery to perform. The smart recovery selection will intelligently look for the file types selected in folders such as, but not limited to, the My Documents and My Pictures folder. This option will normally be enough to find any pictures videos music etc.

The full recovery option will scan every storage device that was present on start-up. Even depending on the size of your hard disk drives this can take anything from 1 to 8 hours to complete. ** Please Note the data recovery system will even work for password protected accounts or directories.



1. At this point insert a USB stick or external USB hard disk drive into the USB ports. This must not be carried out before this step or the system will mark the storage device as read only (this is done to protect the source data).

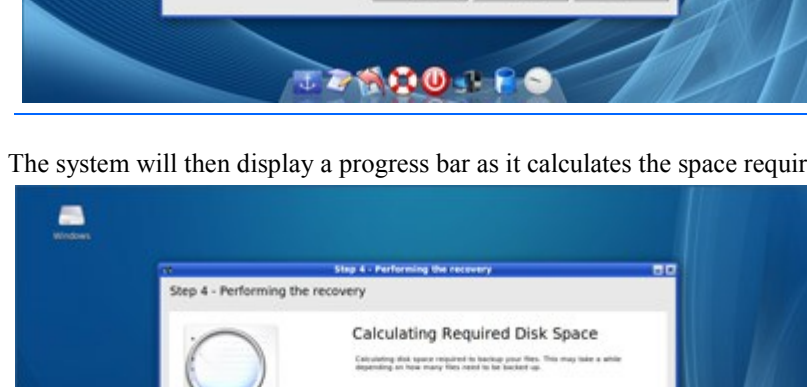
Select the recently inserted device as the location to save the files to.



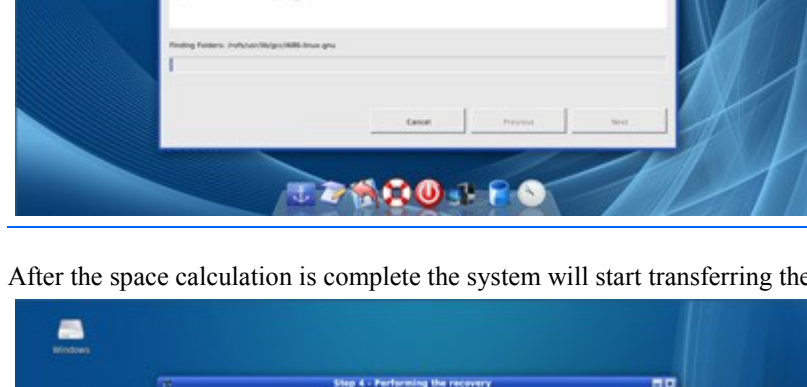
The system will then display a progress bar as it calculates the space required to save the data.



After the space calculation is complete the system will start transferring the files from the source to the destination device (this may take a while)

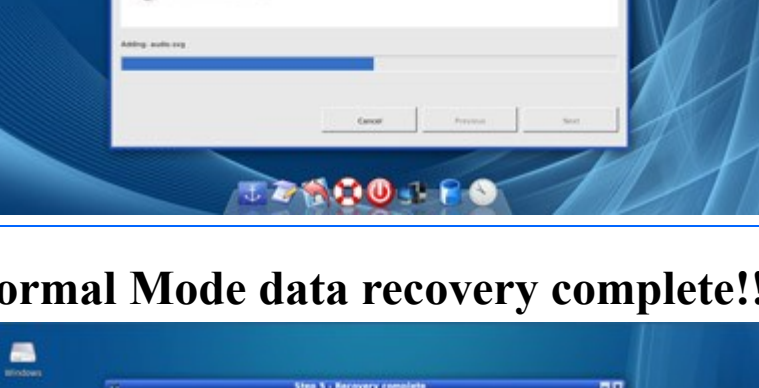


Normal Mode data recovery complete!!



2

Using advance mode, navigation is required to select the source directory, device or devices. Select the source file using the add folder button. Removal of a source directory or device is carried out by selecting the remove folder button.



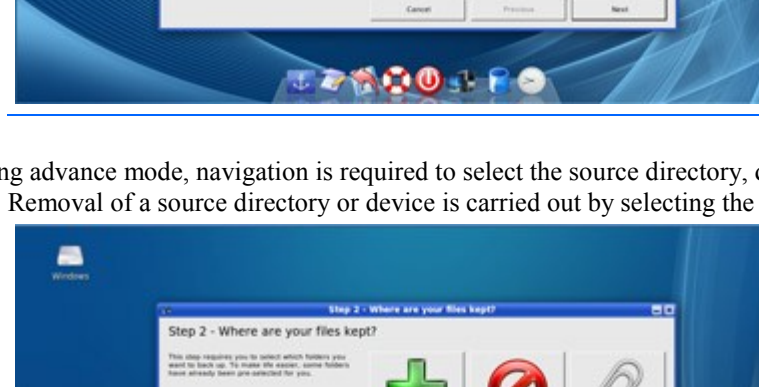
Selection of the required file types is achieved by highlighting and adding from the left hand list. This will move the file types that will be used to the right hand column.



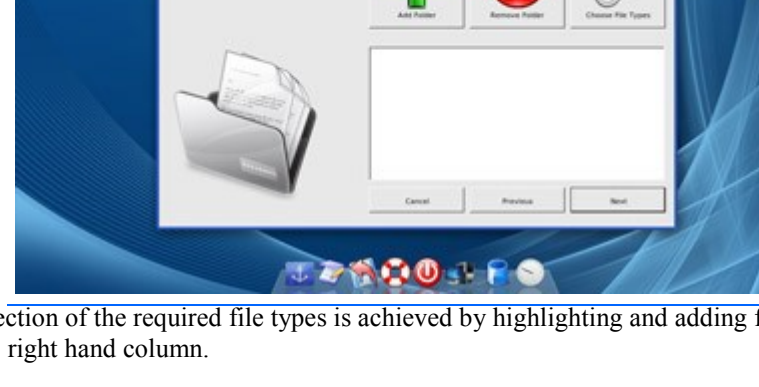
3) At this point insert a USB stick or external USB hard disk drive into the USB ports. This must not be carried out before this step or the system will mark the storage device as read only (this is done to protect the source data). Select Flat Transfer or Preserve Structure and click next.



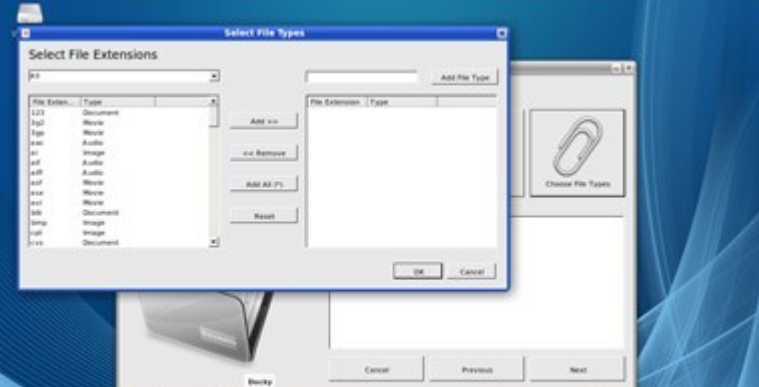
The system will then display a progress bar as it calculates the space required to save the data.



After the space calculation is complete the system will start transferring the files from the source to the destination device (this may take a while)



Advance Mode data recovery complete!!



1 This Data Recovery Disk Is compatible with all operating systems and all manufacturers, some of which are listed below

1. Microsoft Windows 7 Enterprise (32-bit) Data Recovery CD
2. Microsoft Windows 7 Home Basic (32-bit) Data Recovery CD
3. Microsoft Windows 7 Home Premium (32-bit) Data Recovery CD
4. Microsoft Windows 7 Professional (32-bit) Data Recovery CD
5. Microsoft Windows 7 Starter (32-bit) Data Recovery CD
6. Microsoft Windows 7 Ultimate (32-bit) Data Recovery CD
7. Microsoft Windows Vista Business (32-bit) Data Recovery CD
8. Microsoft Windows Vista Enterprise (32-bit) Data Recovery CD
9. Microsoft Windows Vista Home Basic (32-bit) Data Recovery CD
10. Microsoft Windows Vista Ultimate (32-bit) Data Recovery CD
11. Microsoft Windows XP Professional (32 Bit) Data Recovery CD
12. Microsoft Windows XP Home (32 Bit) Data Recovery CD
13. Microsoft Windows 7 Enterprise (64-bit) Data Recovery CD
14. Microsoft Windows 7 Home Basic (64-bit) Data Recovery CD
15. Microsoft Windows 7 Home Premium (64-bit) Data Recovery CD
16. Microsoft Windows 7 Professional (64-bit) Data Recovery CD
17. Microsoft Windows 7 Ultimate (64-bit) Data Recovery CD
18. Microsoft Windows Vista Business (64-bit) Data Recovery CD